

# Application Guidelines

## Eligibility

- Elementary school graduates
- Applicants who passed qualification exam for elementary school graduation

## Admission Procedure

- Non-testing screening process and first-served selection based on older/order of arrival
- ※ It may vary depending on the admission criteria for each school

## Recruitment Period

- Freshman-Transfer Admission** : End of December ~ End of February (Please contact relevant school)
- ※ It may vary by each school. Contact 1544-1294 or relevant school office directly

## Places for Issuance and Reception of Application Form

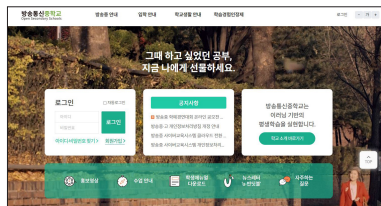
- Issuance of Application** : Administrative office, academic affairs office of each Open Middle School or homepage
- Document Submission** : Prepare forms and drop them off at the applicant's school of interest (identification card required)
- ※ Download application forms and required documents on the Open Middle School homepage ([www.cyber.ms.kr](http://www.cyber.ms.kr)) [Admission Guide → New-Transfer Admission]

## Required Documents

Items	Required Documents
Common	- A resident registration certificate - 1~3 Passport photos
New Admission	- An elementary school graduation (expected) certificate or a copy of the passed certification of qualification exam for elementary school graduation
Transfer Admission	- A certificate of Expulsion - A copy of transcripts of student records from previous secondary school

## Homepage

- Open Middle School Home page [www.cyber.ms.kr](http://www.cyber.ms.kr)



※ Please call 1544-1294 or contact the applicant's school of interest directly as the recruitment period may differ by school.

# Contact Information



24 Coed Schools

Region	School	Office
Seoul	Ahyeon Middle School	02-363-1830
Busan	Hwamyong Middle School	051-366-3536
Daegu	Kyungsang Middle School	053-234-6137
Incheon	Guwol Girl's Middle School	032-629-7777
Gwangju	Gwangju Buksung Middle School	062-607-7026
Daejeon	Deajeon Bongmyeong Middle School	042-820-4841
Ulsan	Haksung Middle School	052-268-1535
Gyeonggi	Suwon Jeil Middle School	031-255-2084
	Howon Middle School	031-829-0743
	Sampyeong Middle School	031-8016-1012
	Gwangmyeong Middle School	02-2684-3669
Gangwon	Namchuncheon Middle School	033-250-9591
	Wonju Middle School	070-7515-2725
	Gangneung Middle School	033-650-6080
Chungbuk	Jusung Middle School	043-279-8212~3 043-279-8280
Chungnam	Hongseong Girls' Middle School	041-632-2623
	Cheonan Middle School	041-563-0242
Jeonbuk	Jeolla Middle School	063-252-2758
Jeonnam	Mokpo Jungang Girls' Middle School	061-283-0238
	Suncheon Yeonhyang Middle School	061-729-7691~2
Gyeongbuk	Pohang Middle School	054-614-1993
Gyeongnam	Gyeongwon Middle School	055-264-9994
	Jinju Middle School	055-746-2248
Jeju	Jeju Jeil Middle School	064-750-3274

Admissions & Academic Advising

1544-1294

[www.cyber.ms.kr](http://www.cyber.ms.kr)

Open Middle School where your dream of learning becomes a reality

# Open Middle School

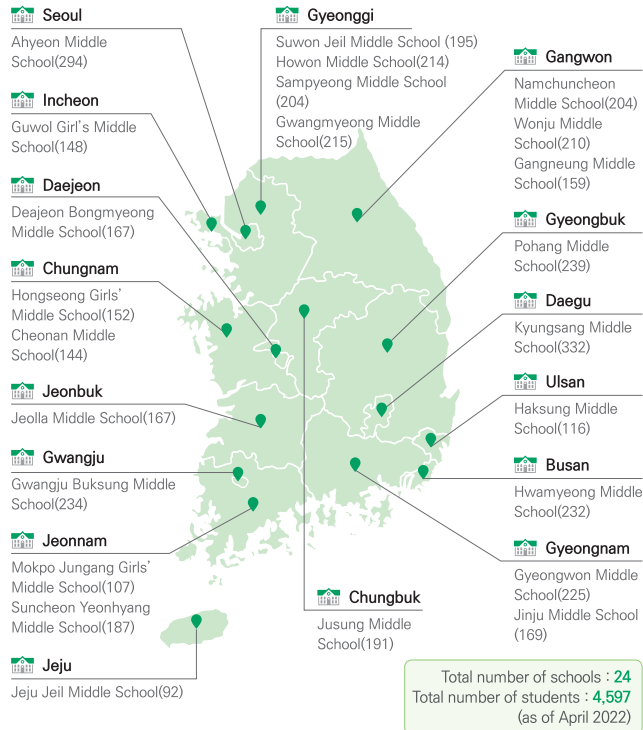
Give yourself the opportunity realize your long-awaited dream of learning



# About Open Middle School

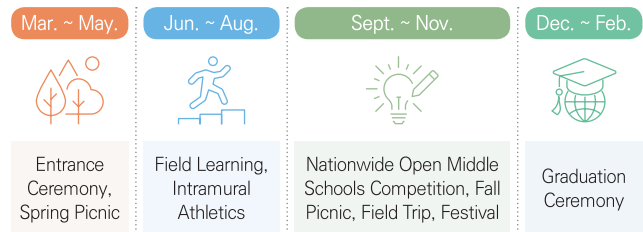
## A school that students can attend from anywhere around the country

Open Middle Schools are established as affiliated schools at prestigious public middle schools across the country so that students are able to attend classes near their homes.



## A school that you go to twice a month

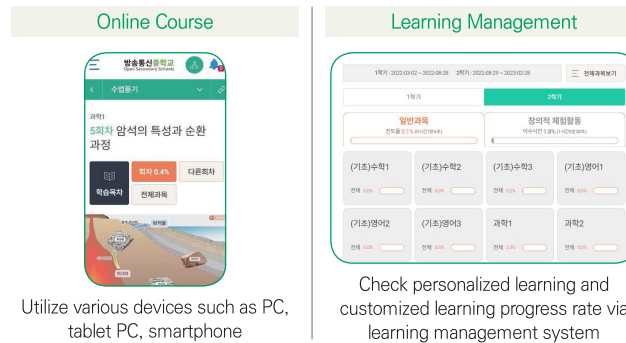
Offline classes occur twice a month (every other weekend), and students take online courses through during the week. Face-to-face classes and various school programs are offered on school days.



※ It may change depending on the school schedule.

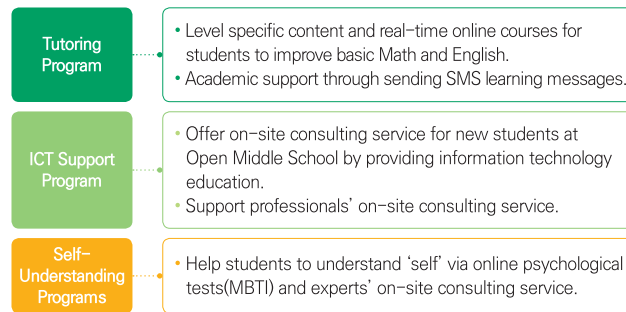
## A school that provides digital-based learning

Students can study online using various Open Middle School Learning Management Systems.



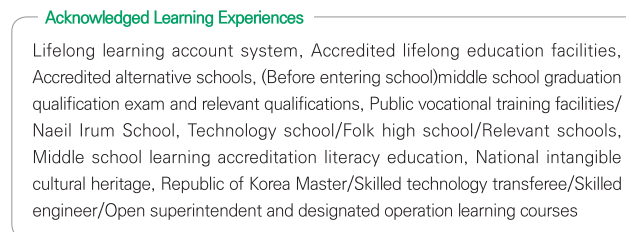
## A school that provides customized education programs

Center for Open Middle and High schools offer education programs customized for students.



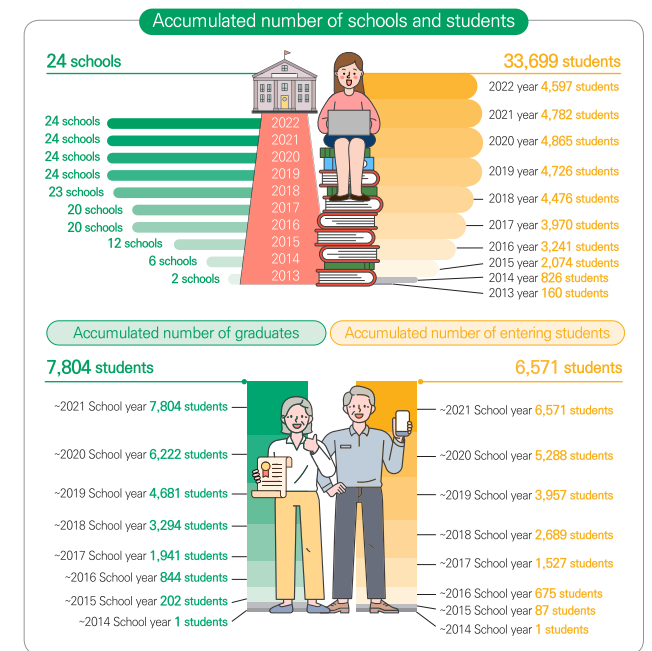
## A school that acknowledges various learning experiences

School learning experiences can be recognized as completing courses except regular courses via the recognition of prior learning and students can graduate early up to one year.

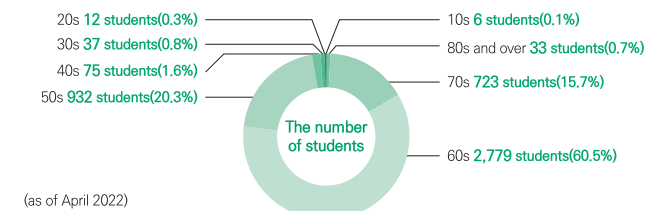


# Open Middle School by Numbers

## Past 10 years of Open Middle School



## A school that can learn regardless of age



## A school that can obtain a regular school diploma

Upon graduation, you will obtain 3 years of a regular middle school diploma and can enroll in high school admission.

